



UNIGLAS®
IT'S CLEAR

UNIGLAS®
IT'S CLEAR

UNIGLAS® | **FACADE** Timber-Glass-Composites stands for:

- Heat insulation of U_{CW} up to $0.7 \text{ W/m}^2\text{K}$.
- CO_2 values reduced by up to 43% (compared to aluminium profiles)
- Reduction of primary energy requirement from 407 kWh/m^2 to 209 kWh/m^2 (compared to aluminium profiles)
- Environmentally friendly repairs due to replacement of individual elements
- Use of timber as a renewable raw material



Our proximity: your advantage



UNIGLAS GmbH & Co. KG
Robert-Bosch-Straße 10
D-56410 Montabaur
Telefon: +49 (0) 2602/94929-0
Fax: +49 (0) 2602/94929-299
E-Mail: info@uniglas.de



© UNIGLAS® 1/2013
Photos: SUPERLAB - green design / Dold und Hasenauer OG

UNIGLAS® | **FACADE**
Timber-Glass-Composites



www.uniglas.net

UNI^{GLAS}® | **FACADE**

Timber - Glass - Composites

Naturalness, energy efficiency and structural flexibility: UNI^{GLAS}® | **FACADE** now combines these advantages in one innovative facade concept. A composite of timber and glass allows the use of elegant and natural materials, and at the same time fulfils the highest standards for diversity and environmental compatibility.

Until now structural glazing facades were only realised with aluminium skeletons. With UNI^{GLAS}® | **FACADE**, these types of glass facades can now also be made from a more environmentally friendly timber structure. In this way the CO₂ footprint of the facade solution is reduced by up to 43%. Omitting a secondary metal construction also provides improved heat insulation. In addition, the Timber-Glass-Composites element (TGC) is impressive, not least due to its architectural aesthetics, but also due to the fact that the flush fitting workmanship throughout, and the omission of a framework, gives an exclusive appearance.



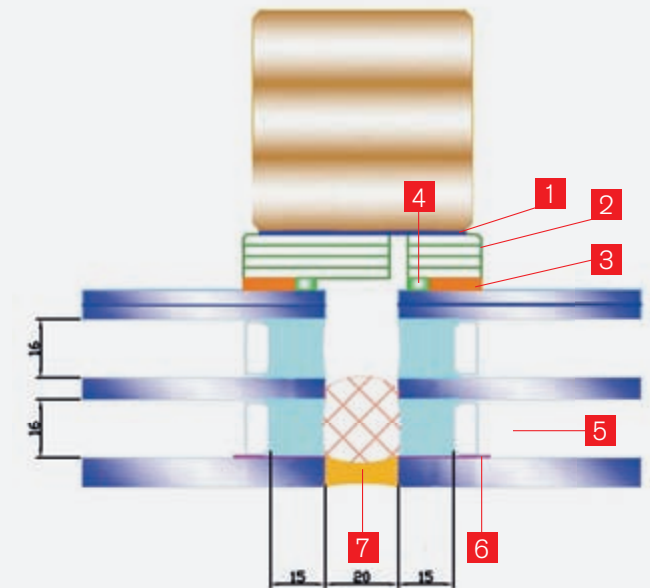
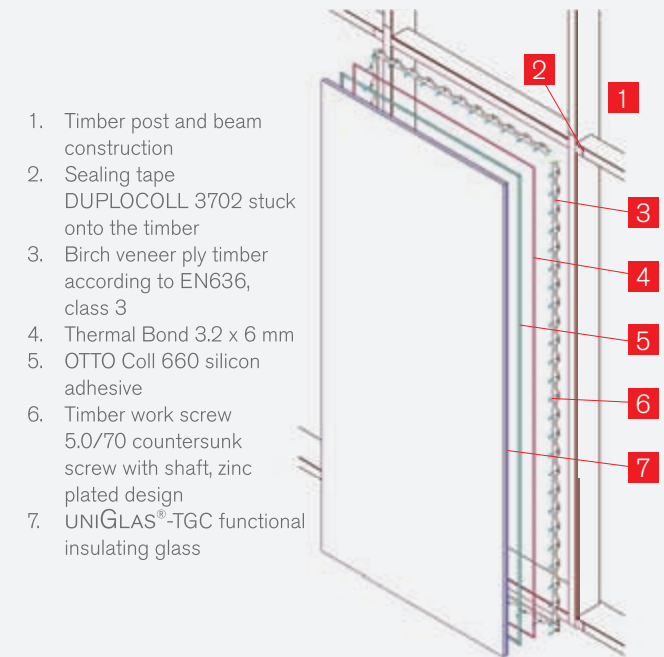
Good ideas, implemented easily

According an EU study by using timber instead of aluminium profiles, the primary energy requirement is almost halved from 407 kWh/m² to 209 kWh/m² with UNI^{GLAS}® | **FACADE**. At the same time, the TGC elements offer heat insulation of U_{CW} up to 0.7 W/m²K. Therefore, UNI^{GLAS}® | **FACADE** complies with the most modern demands on sustainable, ecological construction, whether in a conservatory, for extensions or double terraced houses with up to two storeys and 7m eave height.

In addition, the number of elements in a horizontal direction is unlimited. Therefore, the TGC is suitable for almost all construction projects. Even in practice, the timber-glass idea is impressive due to its uncomplicated implementation: The post and beam construction guarantees simple installation. If a repair is necessary, then the individual elements can be replaced without any problems. Further factors, that help to build successfully, even in the aspect of cost certainty. With the TGC facade, UNI^{GLAS}® presents a practical solution, which caresses your senses. A simple and effective combination.

Elegance with added value

It is rare that a new idea fits into existing structures so seamlessly and elegantly. UNI^{GLAS}® | **FACADE** offers an exclusive look and possibilities for design, which were not available with previous systems. It is not important whether it's a new build or renovation: The combination of timber and glass, which is attached at room height, lends all facades an elegant appearance. Individual elements with glass edge lengths of 1 to 3.5 metres enable large, uninterrupted areas. UNI^{GLAS}® | **FACADE** adjusts to your plans.



1. Sealing tape DUPLOCOLL 3702
2. Birch veneer ply timber according to EN636, class 3
3. OTTO Coll 660 silicon adhesive
4. Thermal bond 3.2 x 6 mm
5. UNI^{GLAS}®-TGC functional insulating glass
6. Enamel strips, optional
7. OTTO Seal S7